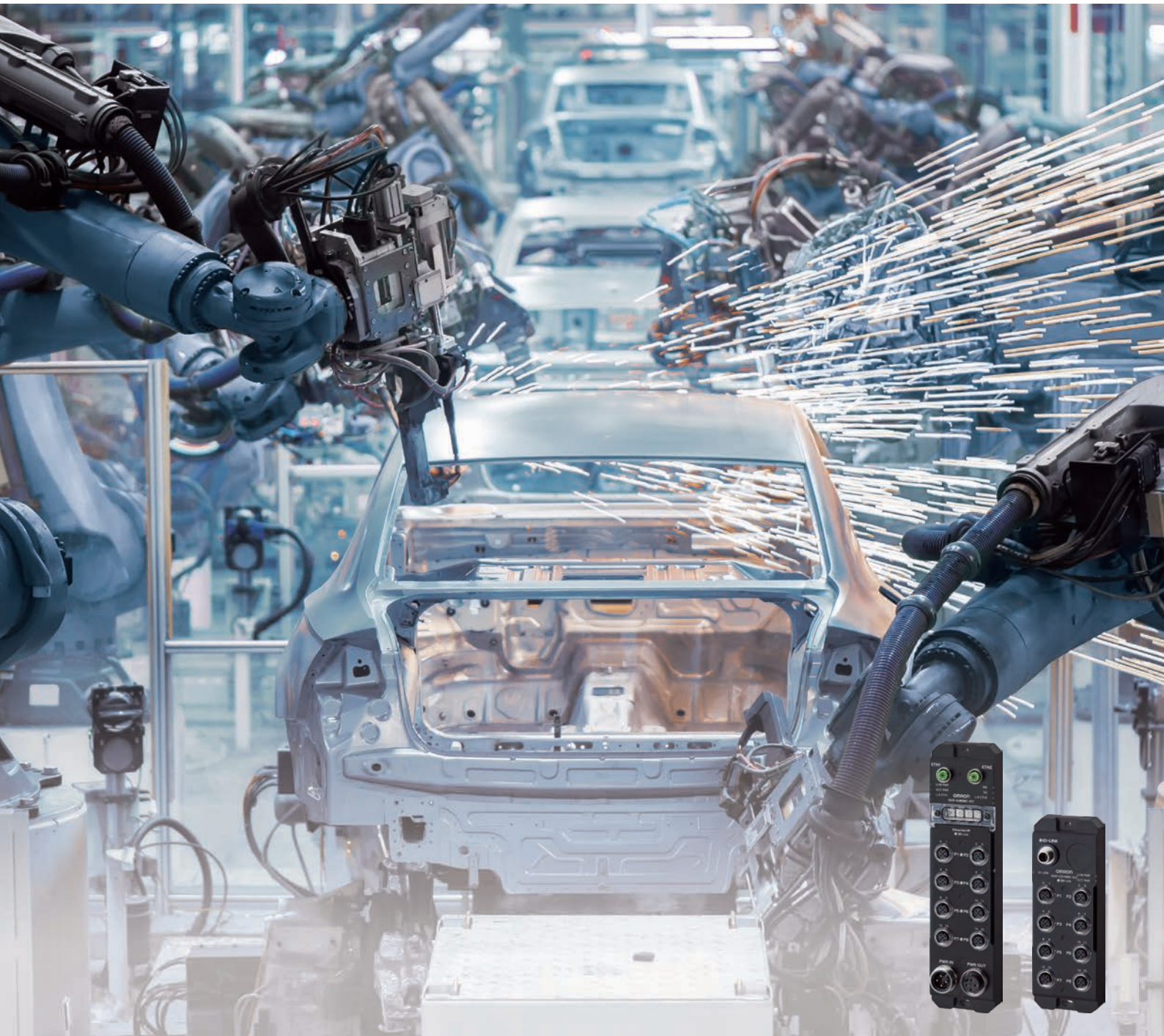


Environment-resistive Remote Terminal NXR Series
IO-Link Master Unit for EtherNet/IP™ or EtherCAT®

OMRON

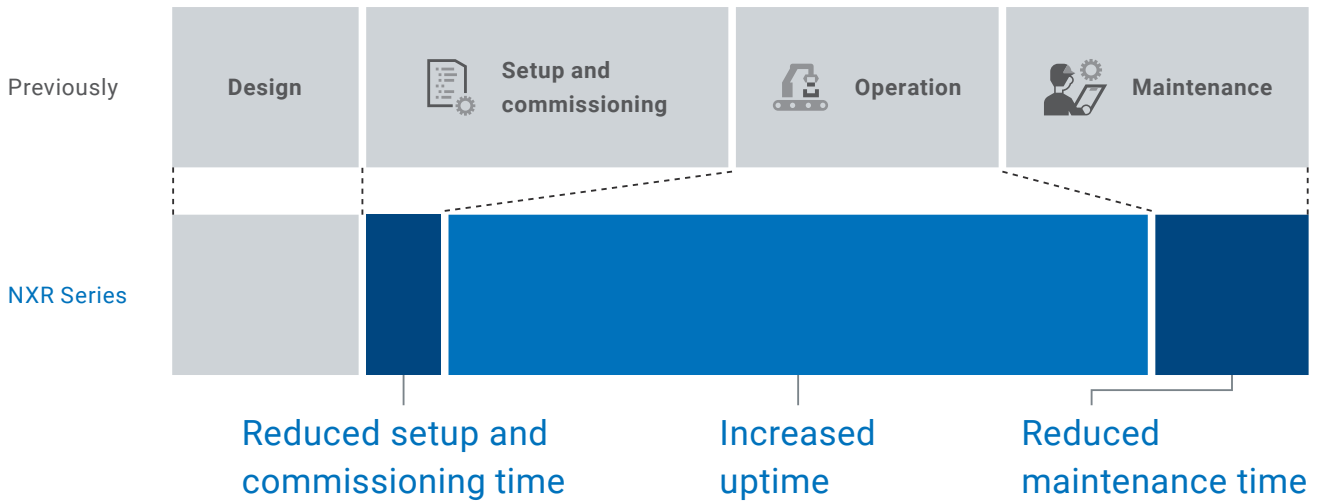
Easy way to adopt IoT for production equipment IP67 Remote Terminal



Streamline commissioning and maintenance efforts and stabilize operation

Since conventional commissioning and maintenance methods via field networks are insufficient for modern manufacturing sites, some problems, such as increase in MTTR and commissioning time, are arising.

As a solution to these problems, OMRON analyzed unnecessary and inefficient work in production processes, and developed NXR Series that comes equipped with various functions to save time and ensure uninterrupted operation.



Setup and commissioning

Simple and quick setup and commissioning P.4



Operation

Stable operation by visualizing communication quality P.6



Maintenance

Short MTTR by easy replacement and quick recovery P.6

Features of NXR Environment-resistive Remote Terminal

No control panel required thanks to IP67 protection

Network

- NXR-ILM08C-EIT
- EtherNet/IP™
- NXR-ILM08C-ECT
- EtherCAT®
- NEW

I/O connector

- NXR-ID166C-IL2
- NXR-CD166C-IL2
- LED indicator: Color universal design
- Enlarged view of I/O connector

Power supply connector

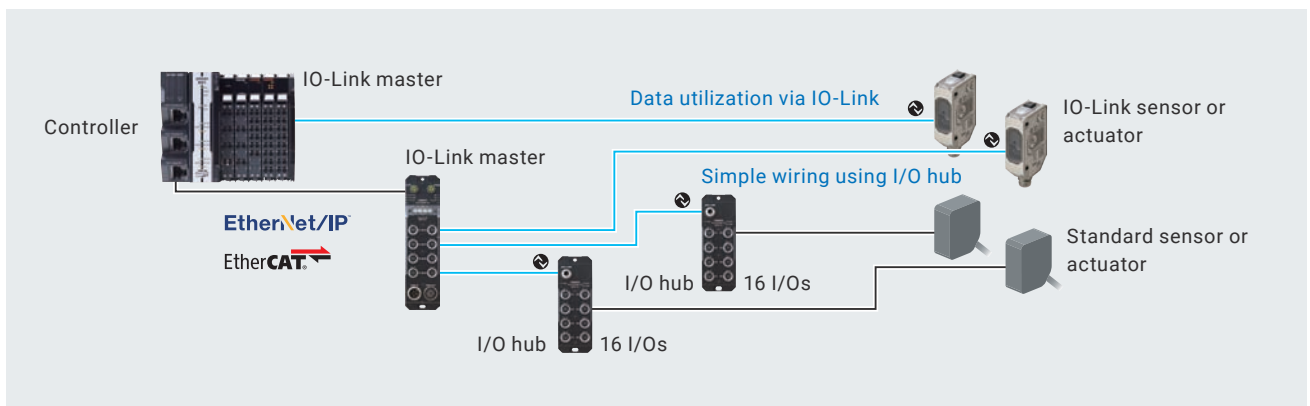
- IO-Link Master Unit
- IO-Link I/O Hub

IO-Link

- Selectable by setting
- 8 IO-Link ports
- 16 digital inputs/outputs
- 7/8-inch connector
- I/O power supply, unit power supply
- Through-wiring
- 16 digital inputs or 16 digital inputs/outputs

Data utilization with reduced wiring

Adding the IO-Link I/O hub simplifies wiring while providing the capability of data utilization.

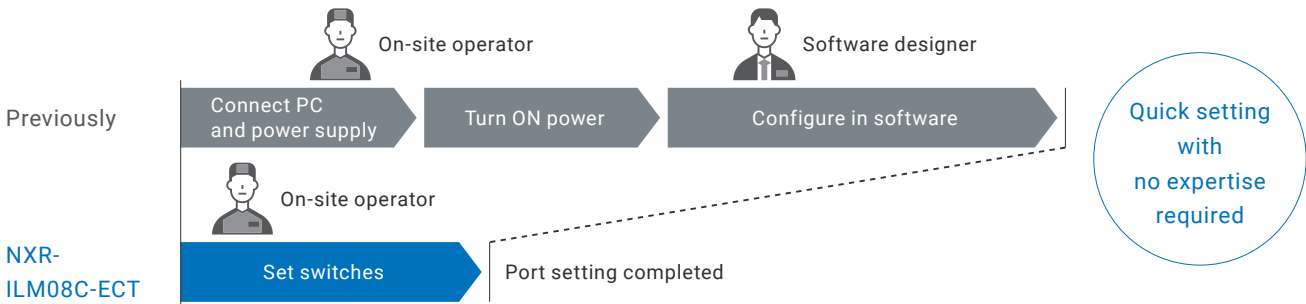




Simple and quick setup and commissioning

Setup without software designer intervention NEW EtherCAT

On-site operators can make port settings for the IO-Link master unit simply by setting the rotary switches to a pre-set pattern, reducing setup time and software designers' workload.



PREVIOUSLY

Connected to PC

Setting each port in software

IO-Link, digital input, or digital output is set for each port individually in software.

Connected to power supply

NXR-ILM08C-ECT

Setting all I/O ports at once

Port setting is completed by setting the switches to a pattern pre-set for each port.

Port setting table of NXR-ILM08C-ECT

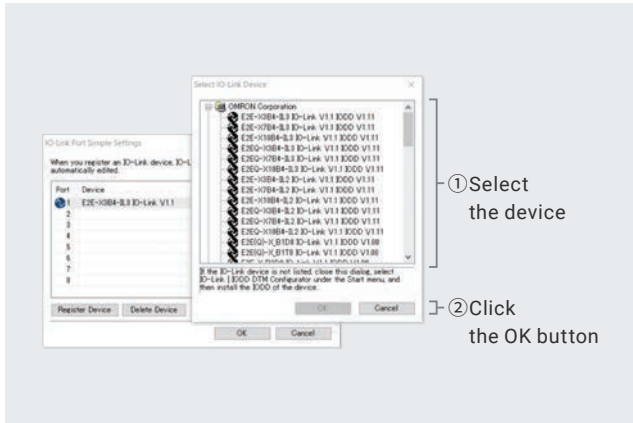
Port	Pin No.	Set switches															
		0	1	2	3	4	5	6	7	8	9	A	B	C	D	E	F
1	4																
	2																
2	4																
	2																
3	4																
	2																
4	4																
	2																
5	4																
	2																
6	4																
	2																
7	4																
	2																
8	4																
	2																

Digital input
 Digital output
 IO-Link
 Set using software

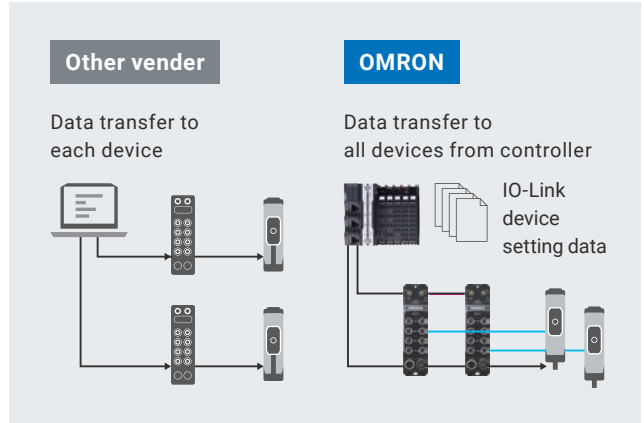
Batch device setting using CX-ConfiguratorFDT

Automatic setting of IO-Link parameters on the configuration tool and transfer of remote terminal and IO-Link device settings from the controller significantly reduce setup time by 90%*1.

*1. Compared with OMRON's NX Series in May 2020.



Just select devices to update all parameters at the same time. Simple configuration prevents human errors.



Configuring all devices at once from the controller eliminates the need to configure each device individually, greatly cutting down setup time.

Easy and accurate configuration using Sysmac Studio

Configuration settings of connected actual IO-Link devices can be verified and obtained in Sysmac Studio.

In addition, the process data structure and device variables of the set devices can be generated automatically, reducing programming time. This can save you configuration time while preventing human errors.

Port	ID-Link device on Sysmac Studio	Compare result	Actual IO-Link device
1	E2E-1084-B2 IO-Link V1.1	Matched	E2E-1084-B2 IO-Link V1.1
2	E2E-1084-B2 IO-Link V1.1	Matched	E2E-1084-B2 IO-Link V1.1
3	E2E-1084-B2 IO-Link V1.1	Matched	E2E-1084-B2 IO-Link V1.1
4	E2E-1084-B2 IO-Link V1.1	Matched	E2E-1084-B2 IO-Link V1.1
5	E2E-1084-B2 IO-Link V1.1	Matched	E2E-1084-B2 IO-Link V1.1
6	E2E-1084-B2 IO-Link V1.1	Matched	E2E-1084-B2 IO-Link V1.1
7	E2E-1084-B2 IO-Link V1.1	Matched	E2E-1084-B2 IO-Link V1.1
8	E2E-1084-B2 IO-Link V1.1	Matched	E2E-1084-B2 IO-Link V1.1

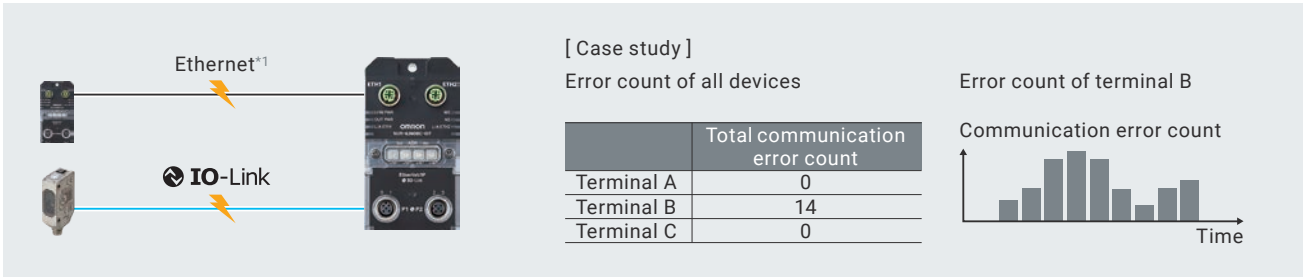
Port	Description	R/W	Data Type	Variable
Port1 Input Data01	E2E(Q)-X_B1D12	R	ARRAY[0..1]	#001_Port1_Input_Data01
Port1 Monitor Output	Port1 Monitor Output	R	USINT	#001_Port1_Monitor_Output
Port1 Control Output1	Port1 Control Output1	R	BOOL	#001_Port1_Control_Output1
Port1 Instability Detection Alarm	Port1 Instability Detection	R	BOOL	#001_Port1_Instability_Detection_Alarm
Port1 Target too Close Alarm	Port1 Target too Close Alarm	R	BOOL	#001_Port1_Target_too_Close_Alarm
Port1 Warning	Port1 Warning	R	BOOL	#001_Port1_Warning
Port1 Error	Port1 Error	R	BOOL	#001_Port1_Error

I/O port of sensor

Variables generated by selecting Create Device Variable from menu

Stable operation by visualizing communication quality **EtherNet/IP** **EtherCAT**

Quantified Ethernet and IO-Link communication statuses allow you to find network cabling errors before operation. During operation, the communication statuses can be monitored, making it possible to check the system before it suddenly stops.



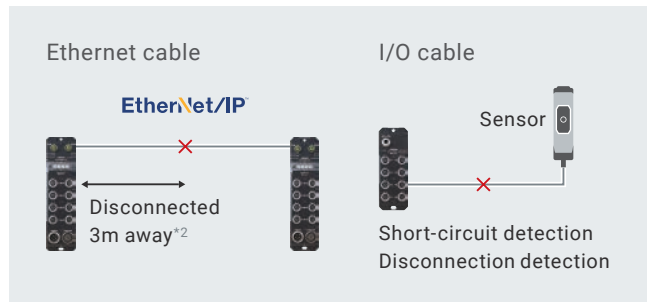
*1. The NJ/NX CPU Units and NY Industrial PCs support EtherCAT.

Short MTTR by easy replacement and quick recovery

I/O cable and communication cable diagnostics

EtherNet/IP **EtherCAT**

The remote terminal reports approximate locations of disconnections or short circuits in Ethernet cables, and detects disconnections or short circuits in I/O cables.




Replacement and setting without software NEW **EtherCAT**

When a failure occurs, the operator can restore the unit by setting the rotary switches, without using a PC. The software designer doesn't need to visit the site. As for port setting for the NXR-ILM08C-ECT IO-Link Master Unit for EtherCAT, the time required for recovery is shortened by 95% compared with setting on a PC*3.


PREVIOUSLY

Skilled software designer reconfigures settings using configuration tool.




NXR-ILM08C-ECT

Even unskilled operator can complete configuration just by setting switches to specified positions.



I/O port setting Node address



I/O port and node address can be set with rotary switches.

Maintenance time reduced by **95%**^{*3}

*2. The NXR-ILM08C-EIT IO-Link Master Unit for EtherNet/IP can report approximate locations of problems in Ethernet cables.

*3. Calculated under our specified conditions in November 2023.

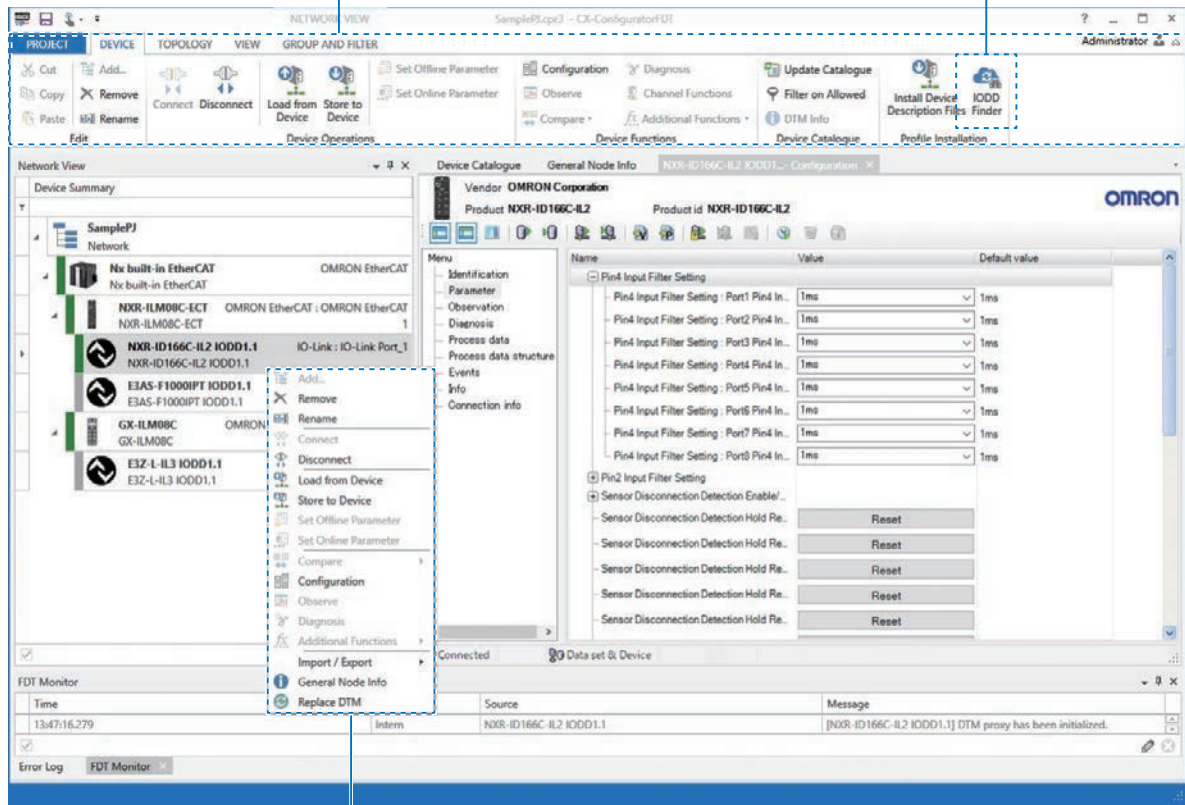
CX-ConfiguratorFDT with improved user interface^{*4}

The updated CX-ConfiguratorFDT provides a familiar user interface in Office 365 and Windows 10.

With enhanced usability, this tool enables you to search for and download profiles online using the IODDfinder.

Modern ribbon-based UI design and usability

IODDfinder: Online profile search and download (IO-Link)



Inherited function to generate variables by selecting Create Device Variable from menu

*4. The CX-ConfiguratorFDT is support software used for parameter setting of IO-Link devices.

Ordering Information

Product name	Number of IO-Link ports	Degree of protection	Port connection	Model
IO-Link Master Unit for EtherNet/IP	8	IP67	M12 connector (A-coding, female)	NXR-ILM08C-EIT
IO-Link Master Unit for EtherCAT				NXR-ILM08C-ECT NEW

Product name	Number of inputs/outputs	Degree of protection	I/O connector	Model
IO-Link I/O Hub	16 inputs	IP67	8 M12 connectors (A-coding, female)	NXR-ID166C-IL2
	16 inputs/outputs			NXR-CD166C-IL2

Specifications

Product name	Item		Specification
IO-Link Master Unit for EtherNet/IP	EtherNet/IP communications	Baud rate, Ethernet physical layer	10Mbps/100Mbps, 100BASE-TX/10BASE-T
		Ethernet switch	Layer 2 Ethernet switch
		Functions	Communication cable diagnostics, Network statistical information acquisition, QuickConnect, DLR (Device Level Ring)
	IO-Link port	Connector, number of ports	Class A, 8 ports
		Baud rate	COM1:4.8kbps, COM2:38.4kbps, COM3:230.4kbps
	Digital inputs in SIO (DI) Mode	Number of inputs	16
		Short-circuit protection, short-circuit detection	Provided
	Digital outputs in SIO (DO) Mode	Number of outputs	16
Short-circuit protection, short-circuit detection		Provided	

Product name	Item		Specification
IO-Link Master Unit for EtherCAT	EtherCAT communications	Baud rate, Ethernet physical layer	100 Mbps/100BASE-TX
	IO-Link port	Connector, number of ports	Class A, 8 ports
		Baud rate	COM1: 4.8 kbps, COM2: 38.4 kbps, COM3: 230.4 kbps
	Functions		I/O port quick settings, Ring topology(EtherCAT)
	Digital inputs in SIO(DI) Mode	Number of inputs	16
		Short-circuit protection, short-circuit detection	Provided
	Digital inputs in SIO(DO) Mode	Number of outputs	16
		Short-circuit protection, short-circuit detection	Provided

Product name	Item		Specification
IO-Link I/O Hub	IO-Link	Baud rate	COM2:38.4kbps
		Number of inputs	16 (digital input hub), 0 to 16 (digital input/output hub)
	Digital inputs	Short-circuit protection, short-circuit detection, disconnection detection	Provided
		Number of outputs	0 to 16 (digital input/output hub)
	Digital outputs	Short-circuit protection, short-circuit detection, disconnection detection	Provided

- Sysmac is a trademark or registered trademark of OMRON Corporation in Japan and other countries for OMRON factory automation products.
- EtherNet/IP™ is a trademark of ODVA.
- EtherCAT® is a registered trademark and patented technology, licensed by Beckhoff Automation GmbH, Germany.
- Windows and Office 365 are either registered trademarks or trademarks of Microsoft Corporation in the United States and/or other countries.
- The product photographs and figures that are used in this catalog may vary somewhat from the actual products.
- Microsoft product screen shot(s) reprinted with permission from Microsoft Corporation.
- Some images are used under license from Shutterstock.com.
- Other company names and product names in this document are the trademarks or registered trademarks of their respective companies.

Note: Do not use this document to operate the Unit.

OMRON Corporation Industrial Automation Company

Kyoto, JAPAN

Contact : www.ia.omron.com

Regional Headquarters

OMRON EUROPE B.V.

Wegalaan 67-69, 2132 JD Hoofddorp
The Netherlands
Tel: (31) 2356-81-300 Fax: (31) 2356-81-388

OMRON ELECTRONICS LLC

2895 Greenspoint Parkway, Suite 200
Hoffman Estates, IL 60169 U.S.A.
Tel: (1) 847-843-7900 Fax: (1) 847-843-7787

OMRON ASIA PACIFIC PTE. LTD.

438B Alexandra Road, #08-01/02 Alexandra
Technopark, Singapore 119968
Tel: (65) 6835-3011 Fax: (65) 6835-3011

OMRON (CHINA) CO., LTD.

Room 2211, Bank of China Tower,
200 Yin Cheng Zhong Road,
PuDong New Area, Shanghai, 200120, China
Tel: (86) 21-6023-0333 Fax: (86) 21-5037-2388

Authorized Distributor:

©OMRON Corporation 2020-2024 All Rights Reserved.
In the interest of product improvement,
specifications are subject to change without notice.

CSM_2_3

Cat. No. R202-E1-04 0124(0520)